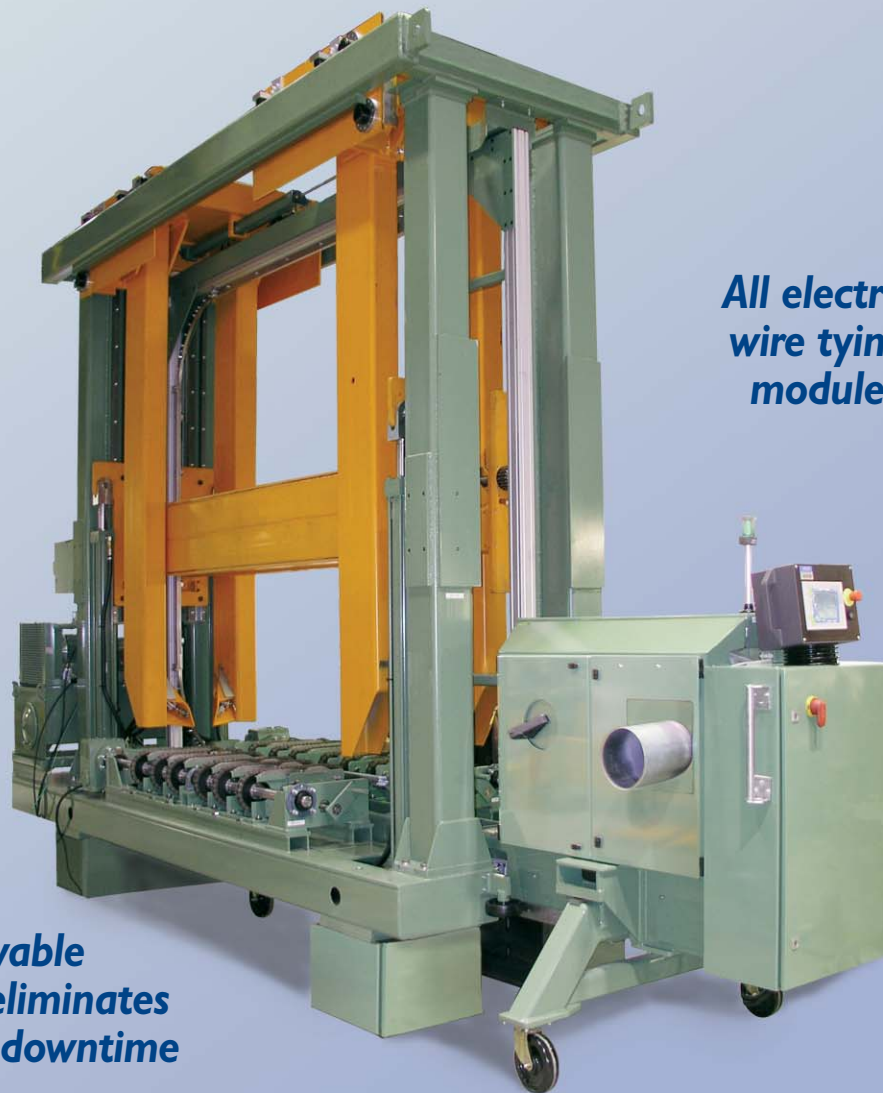




Ovalmatic E9700 Unityer[®]

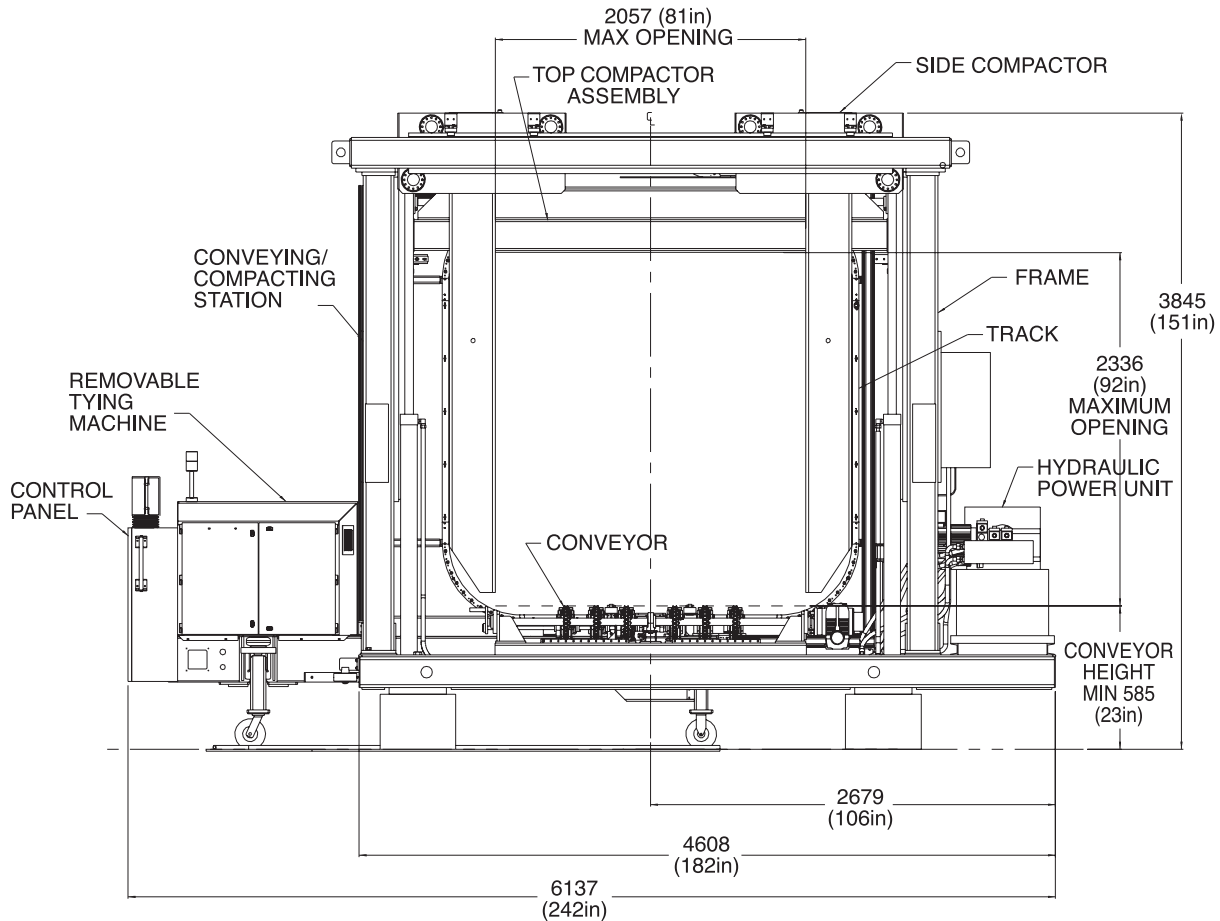


*All electric
wire tying
module*

*Removable
tying unit eliminates
production downtime*

*Innovative new design to meet your needs
for handling and shipping market pulp*

E9700 Unityer® – All Electric Tying Machine*



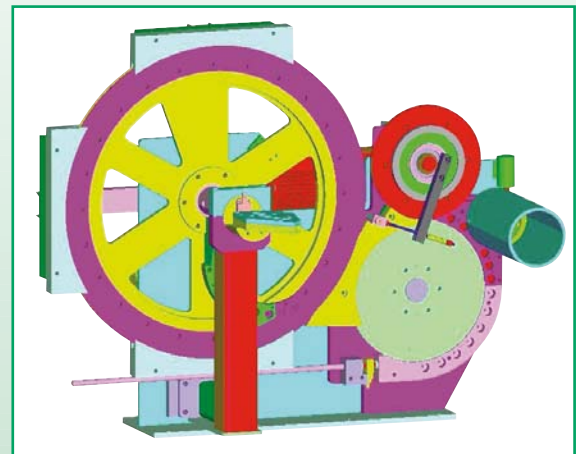
Separable Modules

- tying machine removes from compacting station for access and ease of maintenance
- a spare unit can be introduced or production can continue for later re-introduction

Rotating Disc Accumulator

- complete and positive wire control
- adapts to changes in stack size
- eliminates wire jams

* Hydraulics required for compacting station



E9700 UNITYER®

Built for sustained continuous high output production.



OVALMATIC E9700 UNITYER® FEATURES

- **Electric Wire Tying Module** - one connection for ease of removal or replacement. No leaking hydraulics.
- **Rotating Disc Accumulator** - high speed, accurate management of wire. Eliminate knots and jams.
- **Automatic Wire Threading** - just insert the wire leading end and the machine is ready to function in seconds
- **Auto Wire Re-feed/Reject** - if wire fails to complete feed cycle, the machine, after multiple attempts, ejects the spent wire in a compact coiled format. Reduces hazards
- **AC Vector Motor** drives cams in twister head. Low cycle time. Four bolts reveal all wear components with multiple use surfaces
- **Proven Low Friction** passive track design requires no lubrication. No contamination of pulp
- **On Board PLC from Siemens** (Allen Bradley optional). Touch panel operator interface. Built-in diagnostics. Safe 24 volt DC controls.
- **High Bale Aligning and Compacting Forces** are internalized by heavy duty steel frame. No need for costly floor reinforcement
- **Compacting Station can operate** in a compact mode only when tying station is removed for maintenance.

E9700 UNITYER® STANDARD SPECIFICATIONS

CONVEYOR:	Chain top - powered forward/reverse, 9 meters/minute(30 feet/minute) standard.
WIRE REQUIRED:	Ovalmatic Quality Unitizing Wire
HYDRAULICS:	Self-contained hydraulic power unit using Parker directional valves and Parker axial piston pump
COMPACTING FORCES:	Top Compactor: 20,909 Kg (46,000 lbs.) Side Compactor: 3,273 Kg (7,200 lbs.)
ELECTRICAL SERVICE:	Tying Machine: 208 to 575VAC, 3PH, 50/60Hz, 5kVA Compacting Station: 208 to 575VAC, 3PH, 50/60Hz, 20kVA (excluding conveyor power requirements)
ELECTRICAL MOTORS:	Feed/Tension – 3.7kW (5hp) SEW gearmotor Accumulator – 0.75kW (1hp) SEW gearmotor Twister head – 1.5kW (2hp) SEW gearmotor Conveyor drive – Two 1.5kW (2hp), 208 to 575VAC, 3 PH, 50/60 HZ, reversible SEW gearmotors. Hydraulic unit – 11.2kW (15hp) SEW pump motor; 0.4kW (0.5hp) heat exchanger motor; 1.5kW tank heater All motors are supplied with the equipment. Conveyor drives and hydraulic unit motor starters and VF drives are customer supplied.
ELECTRICAL INTERLOCKS:	Siemens Profibus is standard. Allen Bradley ControlNet or discrete I/O interlocks are optional.
ELECTRICAL CONTROL:	Siemens S7 series PLC, Siemens TP270 series touchscreen is standard. Allen Bradley ControlLogix PLC with PanelView Plus touchscreen is optional. Control voltage is 24VDC. Tying station motors are controlled by Kebco closed loop motion control drives.
ELECTRICAL COMPONENTS:	All components are CE/UL/CSA recognized. Environmental sealing to IP55 (NEMA 4) standards.
ELECTRICAL WIRING:	Proximity switch wiring – 0.64 to 1.02mm diameter (22 to 18AWG) stranded cable Standard wiring – 1.02mm diameter (18 AWG) stranded Primary wiring – 2.05mm diameter (12 AWG) stranded Air/oil standard (water/oil optional)
COOLING:	Required for auto air blast, electrical enclosure cooling, wire tension controls and wire guides.
PNEUMATICS:	5.5 to 6.9 Bar, 1130 liters/minute (80-100PSIG, 40CFM). Minimum filtration requirements: particulate filtration to 5 Microns with moisture removal and oil removal to 1PPM. Instrument air is strongly recommended where available.

MACHINE DATA

WEIGHT:	Tying Station: 1180 Kg (2600 lbs); Compacting Station: 10,890 Kg (23,960 lbs) – including hydraulic unit.
OVERALL HEIGHT:	3845mm (151in) (overall height determined by unit size and conveyor height)
OVERALL WIDTH:	6137mm (242in) – with tying unit engaged
CONVEYOR GAP:	1372mm (54in)
CONVEYOR HEIGHT:	585mm (23in) minimum
COMPACTOR OPENING:	Top: 2336mm (92in) up, 889mm (35in) down. Side: 2057mm (81in) out, 991mm (39in) in. *NOTE: Standard compactor openings are shown, other openings are available to meet customer requirements.

Components listed are Ovalmatic standards specifications and are subject to change without notice.



*Innovative solutions for market pulp packaging
and shipping for over fifty years.*

In Canada & International
1124 Northside Road
Burlington, ON, Canada L7M 1H4
Tel: 905 635-3112 • Fax: 905 632-3690
www.ovalintl.com • Email: sales@ovalintl.com



In USA
120-55th Street North, Fort Payne, AL 35967 USA
Tel: 256 845-1914 • Fax: 256 845-1493
www.ovalintl.com
Email: sales@ovalintl.com